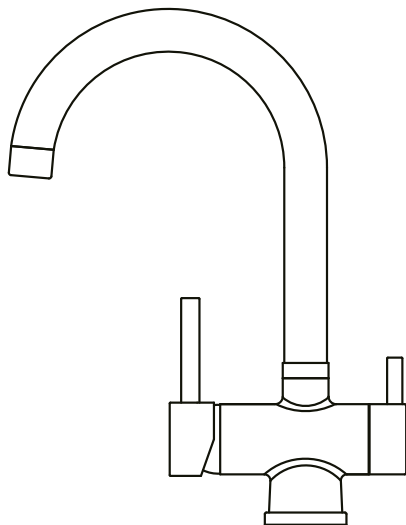




Puretec®
PERFECTING WATER



User Guide

Tripla™ Black

Puretec Tripla™ Black | Triple Action Tapware

What's inside

Puretec Customer Service	2
Operation.....	2
Servicing.....	3
Technical Information.....	3
Recommended Working Pressures.....	3
Installation Guide (BL1 & BL2 models).....	4
Installation Guide (BL3 model)	5
Assembly (BL1 & BL2 models)	6
Assembly (BL3 model).....	7
Water Connection Patterns.....	8
Replacement of Ceramic Disc Cartridge(s).....	9
Tripla BL1 & BL2 Parts Description	10
Tripla BL3 Parts Description	11
Notes	12
Warranty	12
Warranty/Australia	13
Warranty/New Zealand.....	13

Puretec Customer Service

Thank you for purchasing a Puretec Tripla Mixer. Your tap is manufactured from only quality materials and will last for years, if maintained and installed properly.

The system is designed for metropolitan supply water but can be used in other situations. For other types of water supply please contact your local Puretec stockist or call our Puretec Customer Service Helpline prior to installing the tap.

Customer Service Helpline **1300 140 140** (Australia) **0800 130 140** (New Zealand).

Operation

All surfaces should only be cleaned with liquid detergent or soap and water. Under no circumstance should any abrasive or acid base cleaning agents be used.

Servicing

Periodically clean the aerator for any lodged sediment that may restrict flow. A Puretec whole house water filter is highly recommended to ensure longevity of all household tapware.

Should it be necessary to have your mixer serviced while under warranty, please carry out the following procedure:

1. Firstly call the plumber, preferably the one that has installed it, (most problems are caused by the supply lines not being cleaned out properly, prior to connecting the mixers).
2. Make sure that the plumber has installed your mixer according to the User Guide.
3. If the plumber is satisfied that he cannot rectify the problem then contact your plumbing supply store or your local Puretec stockist.

Important: We do not recommend the dismantling of any internal parts of the mixer purely to see what is inside as this will breach your warranty.

Technical Information

Puretec mixers can be used in conjunction with:

- pressure storage hot water systems
- any mains water pressure not exceeding 500 kPa
- maximum hot water temperature of 60°C
- instantaneous hot water systems

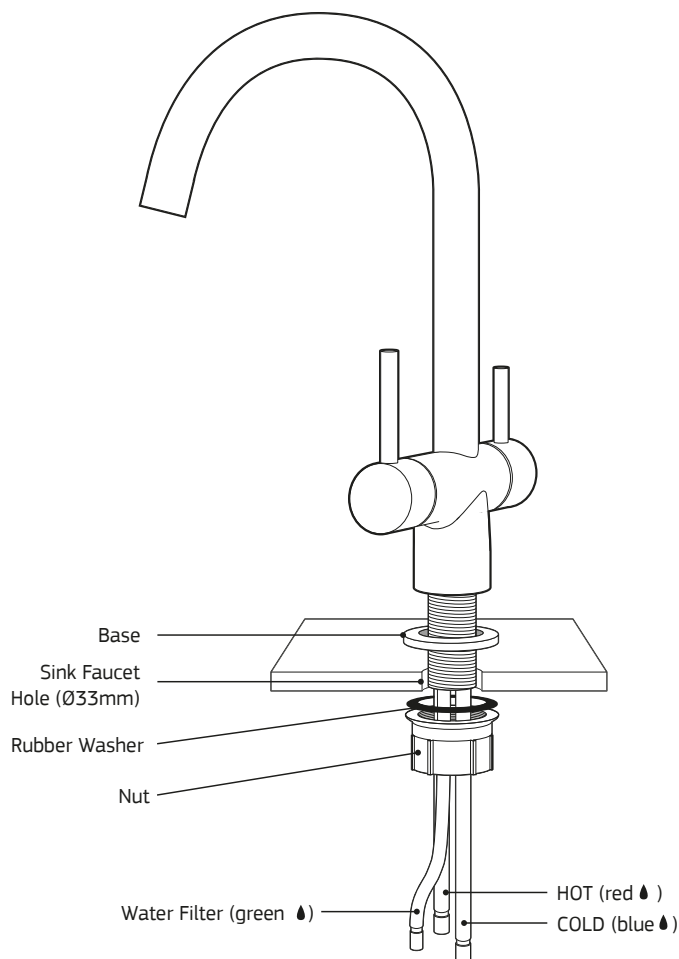
Recommended Working Pressures

- Minimum working pressure 50 kPa (7.5 PSI).
- Maximum working pressure 500 kPa.

It should be noted that water mains pressure builds up during off peak periods, mainly at night, sometimes doubling or trebling normal daytime pressures.

Note: Not suitable for unequal pressure. On high pressure areas where the pressure exceeds the recommended working pressure as indicated above pressure limiting valves must be installed or warranty is voided.

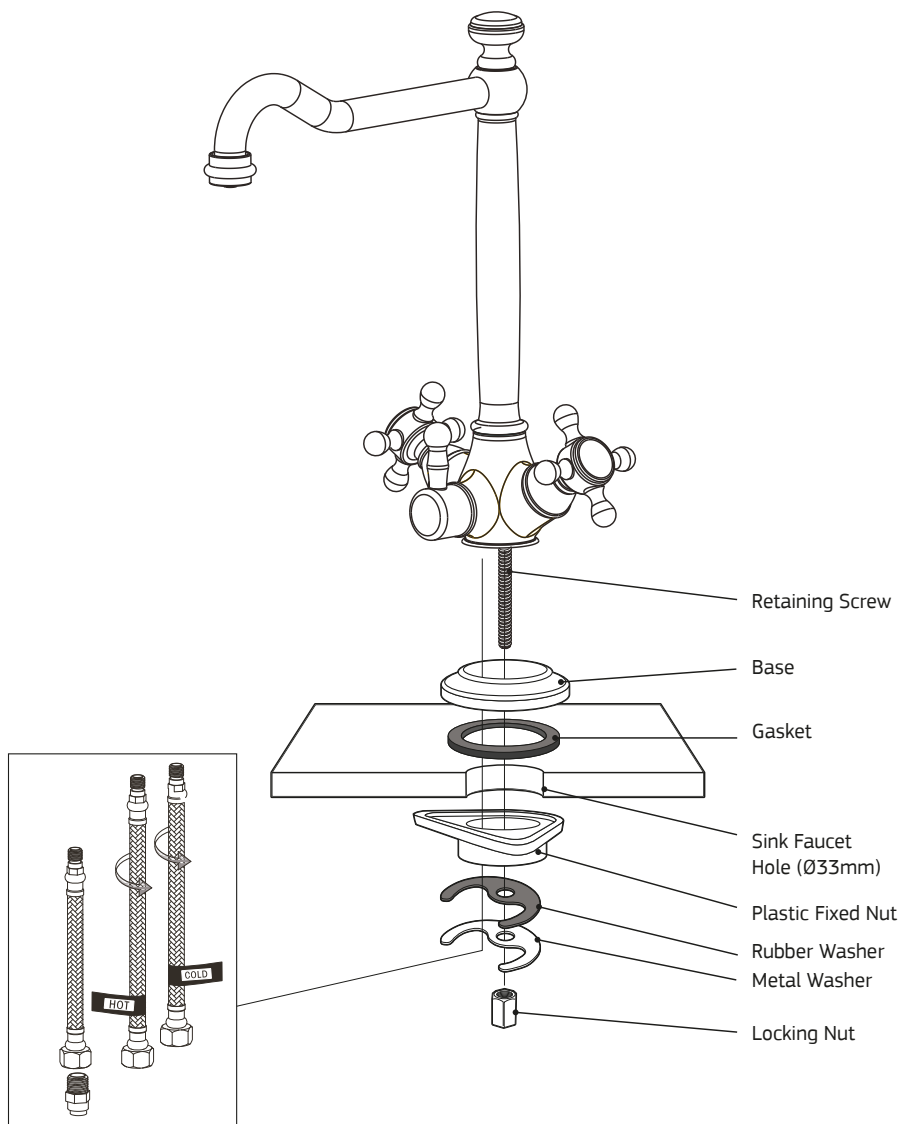
Installation Guide (BL1 & BL2 models)



Note: It is important to flush out the supply pipes to the mixer before connecting the flexible hoses with the initial installation, so no foreign matter can enter into the cartridges.

A Puretec Water Filter is highly recommended for product longevity.

Installation Guide (BL3 model)



Assembly (BL1 & BL2 models)

Step 1.

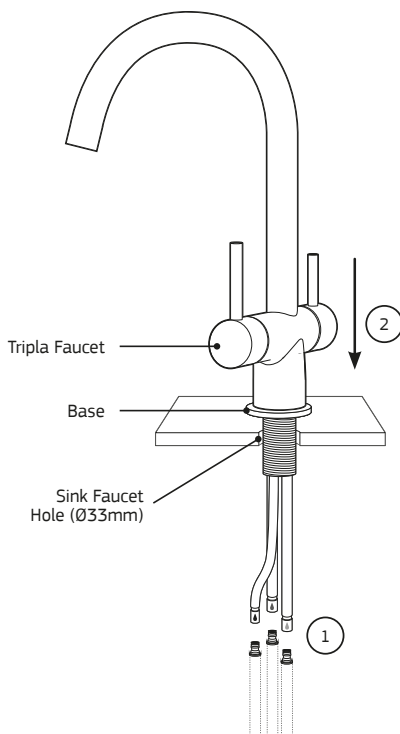
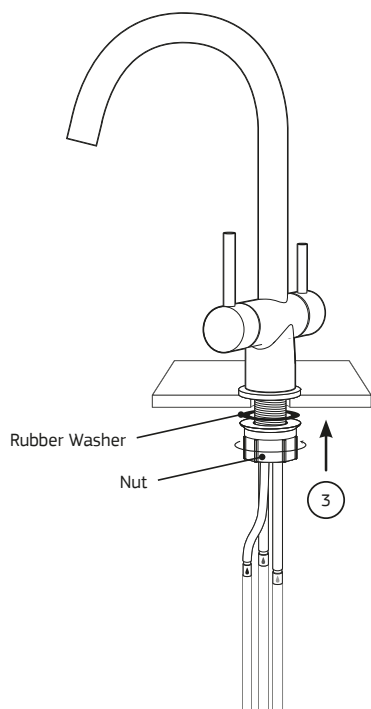
Connect the hoses to the faucet and tighten them.

Only use hand to screw the flexible hose. Do not over tighten. Don't use any tools.

Step 2.

Feed the hoses through the basin or sink. Required through - hole size is Ø33mm.

Base should be on top of the sink.



Step 3.

Place the rubber washer and screw the nut below the sink. Position the tap on your desired angle then tighten the nut.

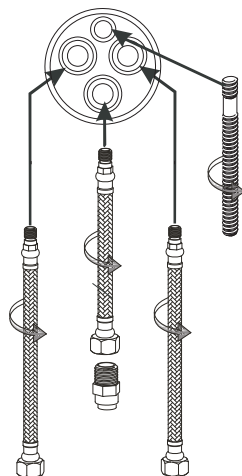
Assembly (BL3 model)

Step 1.

Connect the retaining screw and braided hoses to the faucet and tighten them.

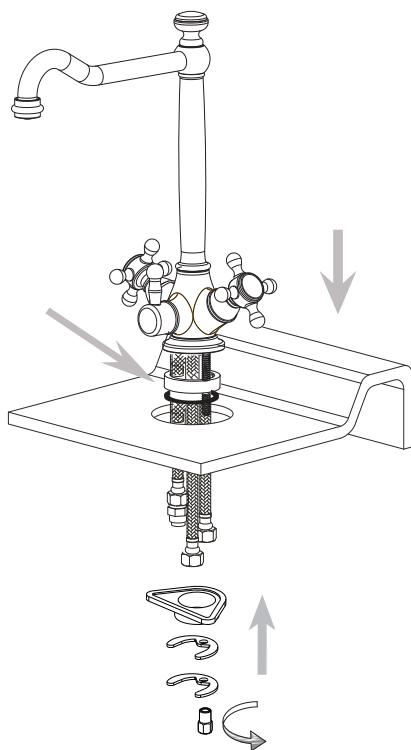
Only use hand to screw the flexible hose. Do not over tighten. Don't use any tools.

See connection pattern on page 8.



Step 2.

Connect the straight adaptor to the filtered flexible hose.



Step 3.

Feed the hoses through the basin or sink. Required through - hole size is Ø33mm.

Base and washer should be on top of the sink.

Step 4.

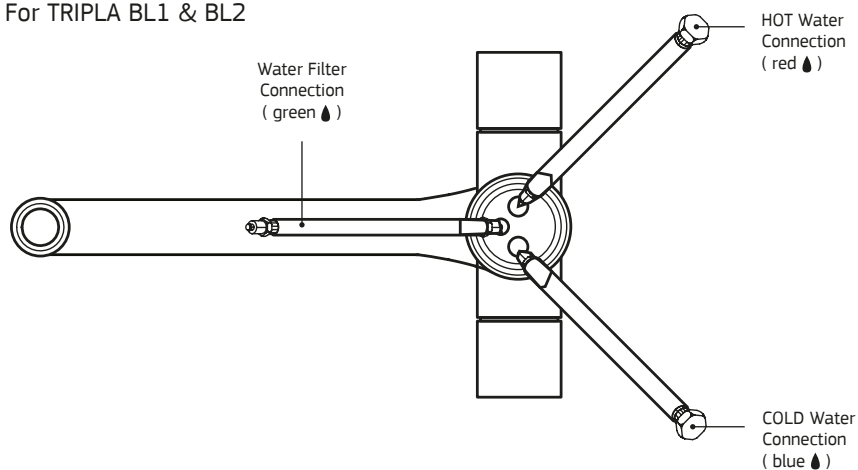
Insert the plastic fixed nut, rubber washer, metal washer and screw the nut by turning counterclockwise.

Step 5.

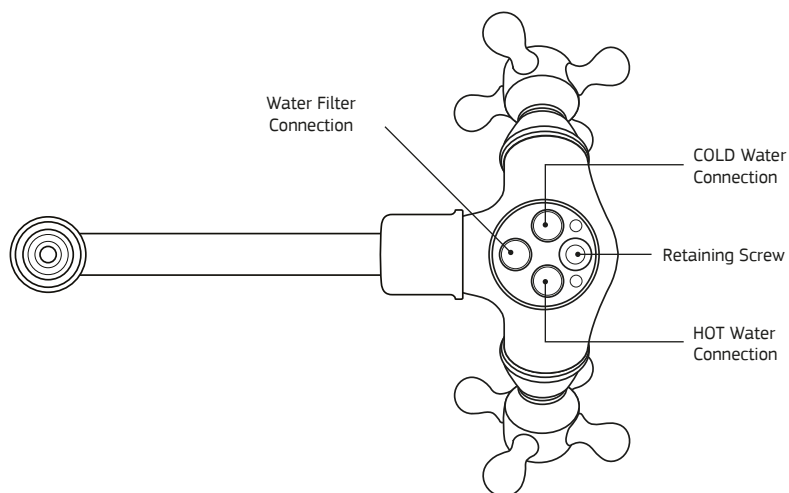
Position the tap on your desired angle and tighten the nut by using a wrench.

Water Connection Patterns

For TRIPLA BL1 & BL2



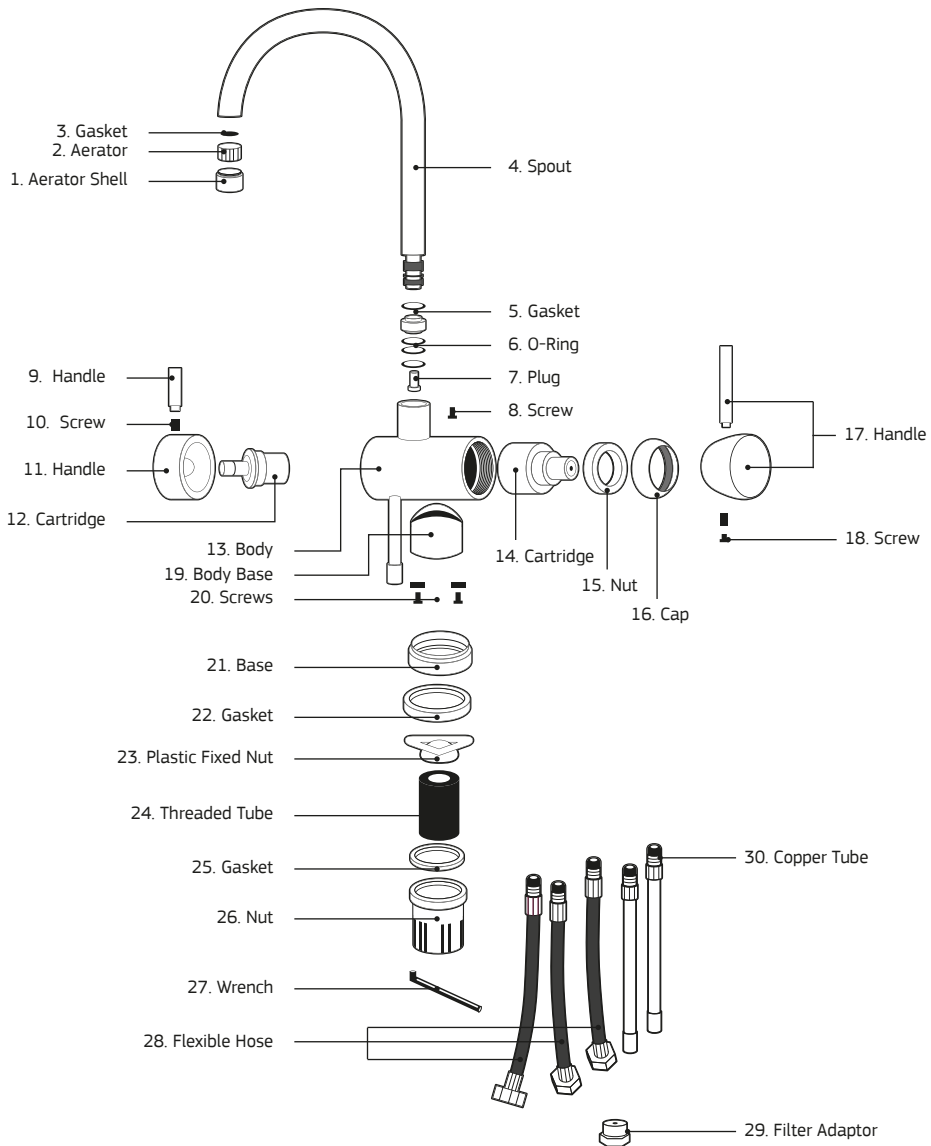
For TRIPLA BL3



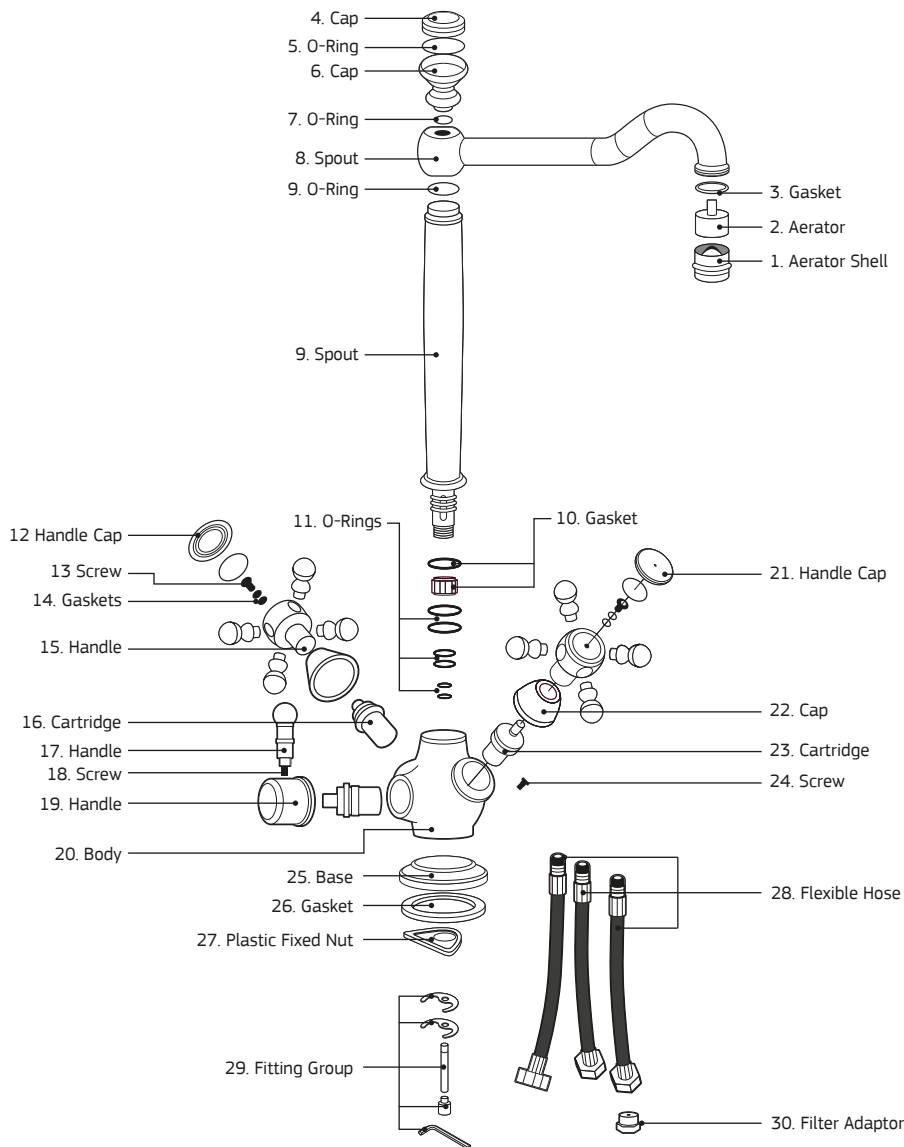
Replacement of Ceramic Disc Cartridge(s)

1. Hot/Cold Outlet
 - Remove screw in lever and lift lever off, now you can unscrew dome cap and loosen the cartridge lock nut.
 - Lift out old cartridge and clean inside making sure no old O-rings are still stuck inside cartridge housing.
 - Insert new cartridge making sure O-rings on bottom of new cartridge have not fallen off and lugs in bottom of cartridge line up with holes in cartridge housing.
 - Now you can tighten lock nut with a torque wrench to 14 newton meters, then reinstall the dome cap and lever screw.
2. Filtered/Rain Ancillary Outlet
 - Remove lever.
 - Unscrew handle then remove cartridge by unscrewing it anti-clockwise, using 5/8" socket. Install cartridge by completing removal instructions as above, in reverse order.
 - Ensure cartridge is firmly tightened not over tighten.
 - Ensure all sealing rings/gaskets are lubricated using silicone lube.

Tripla BL1 & BL2 Parts Description



Tripla BL3 Parts Description



Notes

The complete range of Puretec products are developed, refined and made to meet and exceed stringent specifications for the worldwide market.

Important Note: Sales of products are subject to our Terms & Conditions which are available upon request. All specifications, prices and photos are a guide only and are subject to change without notice. Please ring to confirm details. Do not use products with microbiological unsafe water without adequate disinfection. Under normal circumstances a pressure limiting valve is not required. If incoming water pressure is excessive it may however be necessary to install an approved pressure limiting valve.. Maximum flow depends on cartridge, vessel, pressure, impurities etc.

Warranty

This warranty commences from the date of purchase. Puretec is renowned for its quality and after-sales support so if you have any issues please call 1300 140 140 (AU) or 0800 130 140 (NZ). To make a warranty claim, contact us directly or the place of original purchase. All costs relating to a warranty claim must be approved by Puretec prior to any work being carried out.

In addition to the guaranties provided under the law, Puretec offer warranties as follows: Tripla Tapware 6 year warranty is 1 year parts and labour, plus 5 years parts only.

Puretec will pay your reasonable, direct expenses of claiming under this warranty. You may submit details and proof of your expense claim to place of purchase for consideration.

The warranty only applies if the product was used and/or installed in accordance with the user guide and/or installation instructions. This warranty is given in lieu of all other express or implied warranties and manufacturer shall in no circumstance be held liable for damages consequential or otherwise or delays caused or faulty manufacturing except as excluded by law.

Applicable to all above, is that the Warranties need to be approved by Puretec to ensure product was not incorrectly used, installed or claimed. False and incorrect claims will

be pursued at Puretec's discretion, including chargeable inspection and labour costs incurred.

Warranty/Australia

This warranty is given by Puretec Pty Ltd, ABN 44 164 806 688, 37-43 Brodie Road, Lonsdale SA 5160, telephone no. 1300 140 140 and email at sales@puretec.com.au.

This warranty is provided in addition to other rights and remedies you have under law: Our goods come with guarantees which cannot be excluded under the Australian Consumer Law. You are entitled to replacement or refund for a major failure and to compensation for other reasonably foreseeable loss or damage. You are also entitled to have the goods repaired or replaced if the goods fail to be of acceptable quality and the failure does not amount to a major failure.

Warranty/New Zealand

This warranty is given by Puretec Ltd, Reg. No 4464398, PO Box 875 Cambridge 3450, NZ, telephone no. 0800 130 140 and email at sales@puretec.co.nz.

This warranty is provided in addition to other rights and remedies you have under law: Our goods come with guarantees which cannot be excluded under the Consumer Guarantees Act. You are entitled to replacement or refund for a major failure and to compensation for other reasonably foreseeable loss or damage. You are also entitled to have the goods repaired or replaced if the goods fail to be of acceptable quality and the failure does not amount to a major failure.

This page has been left blank intentionally.

This page has been left blank intentionally.



AUSTRALIA

P 1300 140 140

E sales@puretec.com.au

W puretec.com.au

NEW ZEALAND

P 0800 130 140

E sales@puretec.co.nz

W puretec.co.nz