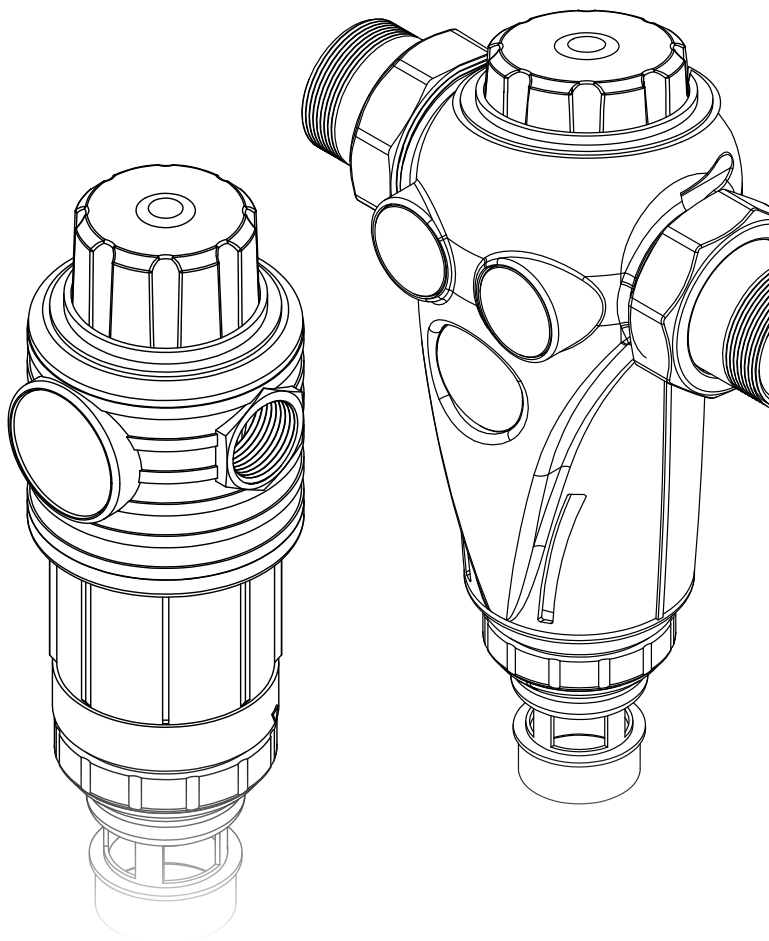




IMB+ Series

Manual Backwash Water Filter Systems User Guide



Puretec®
PERFECTING WATER



WATER TREATMENT

What's Inside

| | |
|---------------------------------|----|
| Puretec Customer Service | 2 |
| Introduction | 3 |
| Installation Record | 3 |
| Warning..... | 4 |
| Importance & Limits | 4 |
| Clause of Ownership..... | 4 |
| Components..... | 5 |
| Before Installation..... | 6 |
| Positioning the IAB System..... | 6 |
| Assembly..... | 6 |
| Fig 1 & 2 - Dimensions | 7 |
| Installation..... | 8 |
| Model Specifications | 10 |
| Water to be Treated | 10 |
| Operation | 10 |
| Maintenance | 11 |
| Troubleshooting | 12 |
| Warranty | 13 |



WaterMark

WMTS103
Certificate No. WM 74593
Pro-Switch Pty Ltd

Puretec Customer Service

Thank you for purchasing a Puretec IMB+ Series Manual Backwash Water Filter System. Your system is a proven performer manufactured from only quality materials and components and will give years of filtered water, if maintained properly.

Customer Service Helpline on **1300 140 140** (Australia) **0800 130 140** (New Zealand).

The Puretec IMB+ Series systems are designed to run economically for many years, dependent on the initial installation and periodical maintenance.

Carefully read through the installation and operating instructions and safety information before installing and putting the unit into service.

Introduction

The IMB+ Series is a semi-automatic, self-cleaning protection filter with an 100 micron filtering mesh designed for filtering water intended for human consumption.

The IMB+ System protects hydro-thermo-sanitary systems and pipes against damage caused by small quantities of foreign bodies, such as: pebbles, rust flakes, oxides and metal scraps with a maximum size of 2 mm.

For applications other than the ones expressly described herein, it is necessary to contact Puretec on 1300 140 140 (Australia) 0800 130 140 (New Zealand), before proceeding with the installation.

The IMB+ is not a purifier and is not a water purification system.

| Installation Record | |
|---------------------|--|
| Purchased From: | |
| Installer: | |
| Model No: | |
| Date Installed: | |



WARNING: This operating manual is your guide to installation, use and maintenance of this equipment and should be kept for future reference.

It is considered to be an integral part of the equipment and must follow the equipment in case of sale, transfer, removal, etc. The instructions described here are intended for your safety and should be read carefully before installing and using the equipment. We recommend that you carefully follow all the instructions, since the proper operation and duration of the equipment depends on it.

When in doubt while reading this manual or for any other question regarding installation, use and maintenance of the equipment please contact Puretec at 1300 140 140 (Australia) 0800 130 140 (New Zealand).

Importance & Limits

This document contains the instruction manual for use and maintenance as well as assembly and installation information which have been designed to provide general information about use and operation of the equipment. This document contains instructions and requirements which are not supposed to replace any local government requirements and current legislation. For any questions regarding installation, use or maintenance of the equipment please contact Puretec at 1300 140 140 (Australia) 0800 130 140 (New Zealand).

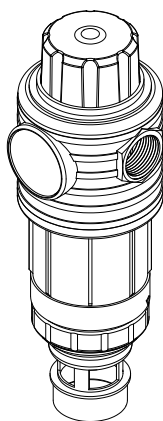
Clause on the Ownership

The contents of this user guide are the exclusive property of Puretec and cannot be reproduced or copied in any form whatsoever. The manual may only be used as a reference tool for the supplied equipment and shall not be submitted to examination by third parties without prior written authorisation by Puretec. Puretec reserves the right to make changes to its products and user guides without notice.

Components

After opening the box, check the integrity of the equipment and the presence of all the items.

IMB25-W

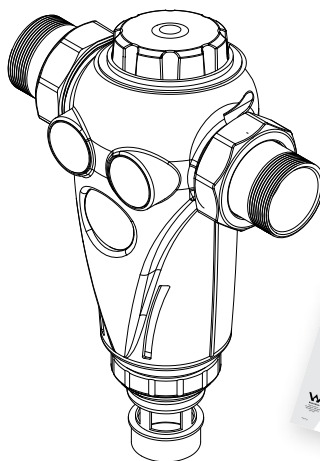


IMB+ Filter System



User Guide

IMB50-W



IMB+ Filter System



User Guide

Before Installation



Before installing the filter, make sure that the system complies with any local laws or regulations.

The IMB+ System is not equipped, in its standard version, with anti-flooding devices or with devices aimed at verifying, checking and triggering an alarming in the event of uncontrolled water leaks. If necessary, purchase and install a suitable anti-flooding device separately.

Ensure there is an appropriately size drain available for the back washing

Do not install the IMB+ System downstream of boilers or in applications involving the passage inside the filter of water above 30 °C. Install the IMB+ filter upstream of the equipment to be protected.

Pay attention to the threads of the connections that could cause hand cuts and abrasions.

Installation Note: A water filter system/tap, like any product, has a limited life and may eventually fail. Also sometimes failure happens early due to unforeseen circumstances. To avoid possible property damage, this product should be regularly examined for leakage and/or deterioration and replaced when necessary. A drain pan, plumbed to an appropriate drain or outfitted with a leak detector, should be used in those applications where any leakage could cause property damage, and/or the water supply should be turned off if no one is home/present.

Positioning the IMB+ System

The IMB+ System must be installed in a hygienically suitable, dry, clean place, indoors, away from: frost, direct exposure to sunlight, humidity and atmospheric agents (rain, snow, hail).

Do not install the IMB+ System in wells, near drains or in foul-smelling places.

Do not install it where there may be chemical vapors, gases or fumes of any kind. Avoid installation in confined spaces that restrict performance or maintenance operations.

Assembly

The filter is supplied with the water inlet on the left.

Fig. 1 - IMB25W Dimensions

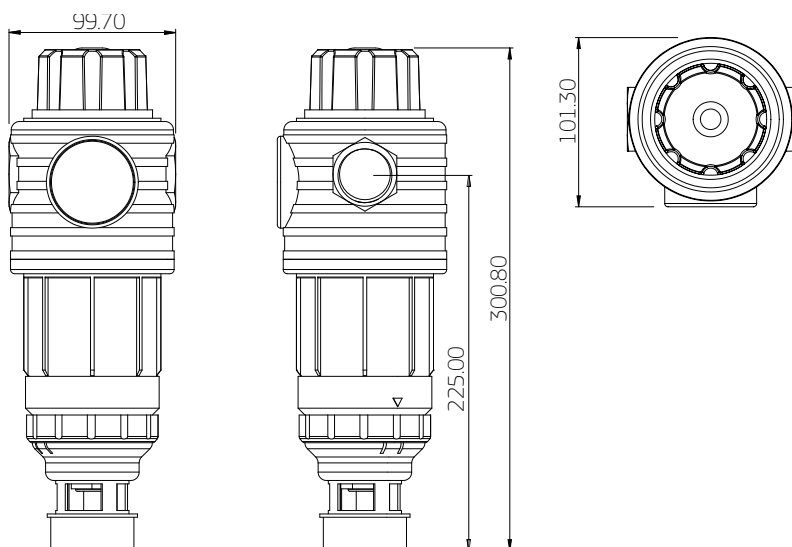
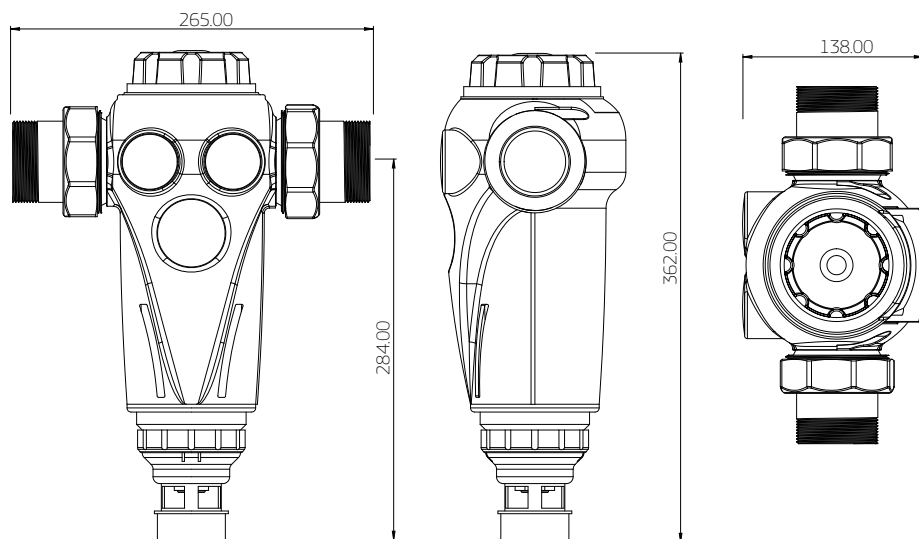


Fig. 2 - IMB50W Dimensions



Installation

Installation must be carried out by a qualified tradesperson, in compliance with all local laws.

The plumbing system in which the filter is installed and the installation of the filter itself must be carried out in compliance with local laws.

Puretec is not responsible for damages to property or persons resulting from the incorrect installation of the filter and/or the installation of the filter in a system not complying with the local laws.

All materials used for the construction of water distribution systems for human consumption must comply with local laws. The construction and modification of a water distribution system intended for human consumption requires modifications to be carried out in such a way as not to jeopardise the hygiene of the system.

After its construction or modification, a water distribution system intended for human consumption has to be washed and disinfected according to the requirements of local law.

The filter must not be installed between the boiler and the safety devices.

A non-return valve should be installed in conjunction with this product, along with a by-pass valve for untreated water.

Ensure there is an appropriate point for drainage.

Prevent solvents, oils, greases, acidic or caustic substances and detergents from coming into contact with the external plastic and brass parts of the equipment.

In case of damage during transport or assembly, do not install the equipment.

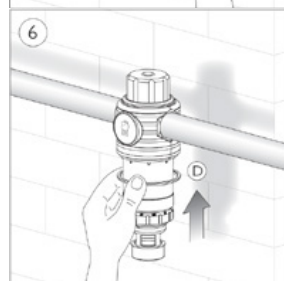
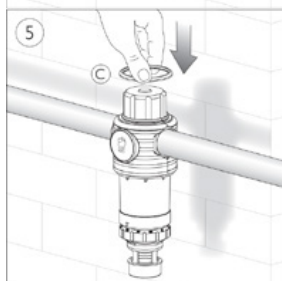
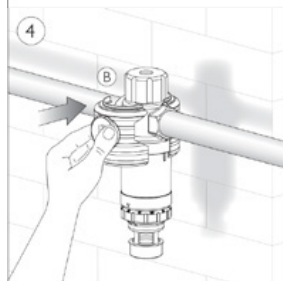
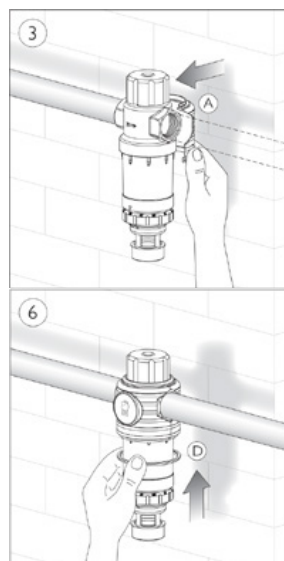
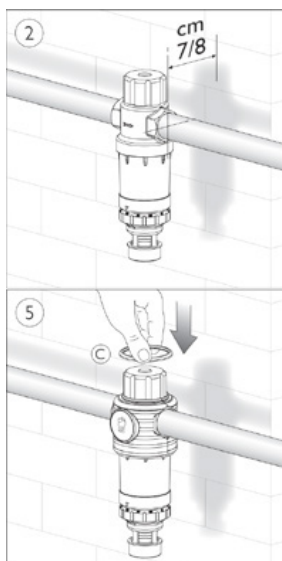
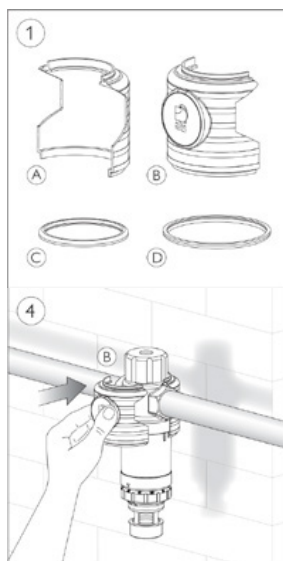
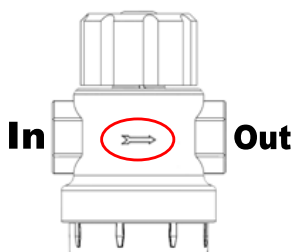
If the system is subject to water hammering, install an appropriate damping system. If the water pressure can exceed the maximum operating pressure of the filter even for short periods, install a pressure limiting device.



Avoid overhead installation in order to prevent damages to property or persons in the event of a fall, a collapse or water leakages.

- Remove the top and bottom green rings to remove the plastic covers.
- Install the filter, ensure that the water flow direction matches the flow direction arrow as indicated by the arrow stamped on the brass filter head. Make sure there is enough room around the filter so the cover can be removed for easy access.
- Install the piping in the inlet and outlet sides of the filter head.
- Replace the plastic covers and rings.

Note: The filter MUST be installed following the water flow direction indicated on the filter head. On installations with the inlet water on the right, the label with technical data would stay behind the filter (facing the wall). Any other arrangement may cause incorrect operation of the device. The filter discharge must be canalised in a view drain.



Hydraulic Checks After Installation

After having opened the water upstream of the equipment, check for any leaks.

- 1) Check that the appliance is correctly positioned so as to ease ordinary maintenance operations.
- 2) Check that the system is equipped with: disconnecter, by-pass, sampling taps
- 3) Verify that there are no leaks from the inlet and outlet fittings and from the filter drain.

Model Specifications

| | IMB25W | IMB50W |
|--------------------------------------|----------------------------------|---------------|
| Connection | 1" BSPF | 2" BSPM |
| Min/Max Flow Rate | 63 - 190 Lpm | 163 - 453 Lpm |
| Micron Rating | 100* | |
| Min/Max Pressure | 150 - 1000~ kPa | |
| Min Pressure for Backwashing | 250 kPa | |
| Water Consumption During Backwashing | 14 L | |
| Min/Max Water Temperature | 5 - 30°C (protect from freezing) | |

*Micron rating is nominal. ~If pressure exceeds max pressure, an approved pressure limiting device needs to be fitted. Note: Check local plumbing regulations as a specific kPa limit for the pressure limiting valve may be required (in particular, The Australian & New Zealand Plumbing Standards. Ref. AS/NZS 3500.1:2021, Clause 3.3.4). If water hammer is present, fit a hammer arrestor close to the source of the hammer.

Water to be Treated

The IMB+ System is not designed to filter closed circuit water, water containing large quantities of sand or coarse particles larger than 2 mm, silt or chemicals (oils, solvents, acids, bases, glycols).

Operation

Often filters exclusively remove the dirt accumulated in the bowl, without cleaning the cartridge. The Puretec IMB+ Series guarantees an efficient and thorough cleaning of the filter cartridge too, thanks to its brushing and drainage functionality.

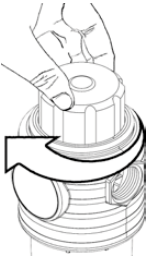
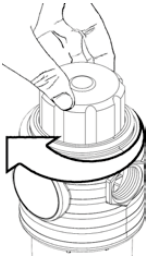
Maintenance

Filter Cleaning

Puretec recommends backwashing the screen every 3-4 days, or at user discretion, whenever there is a drop in pressure. If necessary, backwashing can be repeated.

During the backwashing process, the filter discharges some water. This discharge can be run off to a drainage point.

The cleaning of plastic parts can only be performed with a soft damp cloth, without using any solvents, soaps or acid detergents.

| FILTER CLEANING | | | |
|---|---|---|---|
|  | <p>1° "CLICK" BACKWASH</p> <p>Rotate the green handle clockwise until the first "click". Keep the handle in this position for a few seconds, until all of the build up has been removed from the filter cartridge.</p> |  | <p>2° "CLICK" FILTRATION</p> <p>Rotate the green handle clockwise again to bring the filter back into the operation position with the discharge valve in the neutral position.</p> |

Note: In order to obtain effective cleaning of the filter, a minimum water pressure of 2 bars is required. If necessary, during the filter cleaning operation, the shut off valve positioned downstream of the filter should be closed.

Periods of Non-Use

For periods of non-use less than 30 days, perform the filter cleaning operation repeatedly (4-5 times). For non-use periods longer than 30 days, perform filter sanitisation.

Non-use means that the plumbing system remains still without any water being drawn from the taps (e.g. holiday period).

If the plumbing system is subject to cleaning and sanitising maintenance, the IMB+ system should also be included in the maintenance plan.

Note: The sanitising maintenance must be carried out exclusively by a qualified plumber.

Periodic Checks

It is advisable to have a check performed every six months by an qualified plumber in order to ensure the system continues to perform.

Preventative Maintenance

Preventative maintenance or repair, if not correctly performed, can compromise the functional and/or safety features: these operations are deliberately omitted in this user guide.

Therefore, all preventative maintenance and repair not mentioned in this user guide must be carried out exclusively by Puretec or their agents.

In case of doubt, contact Puretec on 1300 140 140 (Australia) 0800 130 140 (New Zealand).

Troubleshooting

| Problem | Cause | Solution |
|-----------------------------------|--|---|
| Low pressure. | Filtering element dirty. | Perform a manual backwashing. |
| Leakage from the discharge valve. | Discharge valve not completely closed due to the presence of a foreign body in the seat. | Contact Puretec on 1300 140 140 (AU) 0800 130 140 (NZ). |
| | Filter phased-out | |

Warranty

Any claim under this warranty must be made within 1 year of the date of purchase of the product. This product is warranted to be free of defect of material and workmanship for 1 year from date of purchase. 1 year warranty is parts and labour only. Excludes consumables.

Puretec is renowned for its quality and after-sales support so if you have any issues please call 1300 140 140 (AU) or 0800 130 140 (NZ). To make a warranty claim, contact us directly or the place of original purchase. All costs relating to a warranty claim must be approved by Puretec prior to any work being carried out.

Puretec will pay your reasonable, direct expenses of claiming under this warranty. You may submit details and proof of your expense claim to place of purchase for consideration.

The warranty only applies if the product was used and/or installed in accordance with the user guide and/or installation instructions. This warranty is given in lieu of all other express or implied warranties and manufacturer shall in no circumstance be held liable for damages consequential or otherwise or delays caused or faulty manufacturing except as excluded by law.

Applicable to all above, is that the warranties need to be approved by Puretec to ensure product was not incorrectly used, installed or claimed. False and incorrect claims will be pursued at Puretec's discretion, including chargeable inspection and labour costs incurred.

Warranty/Australia

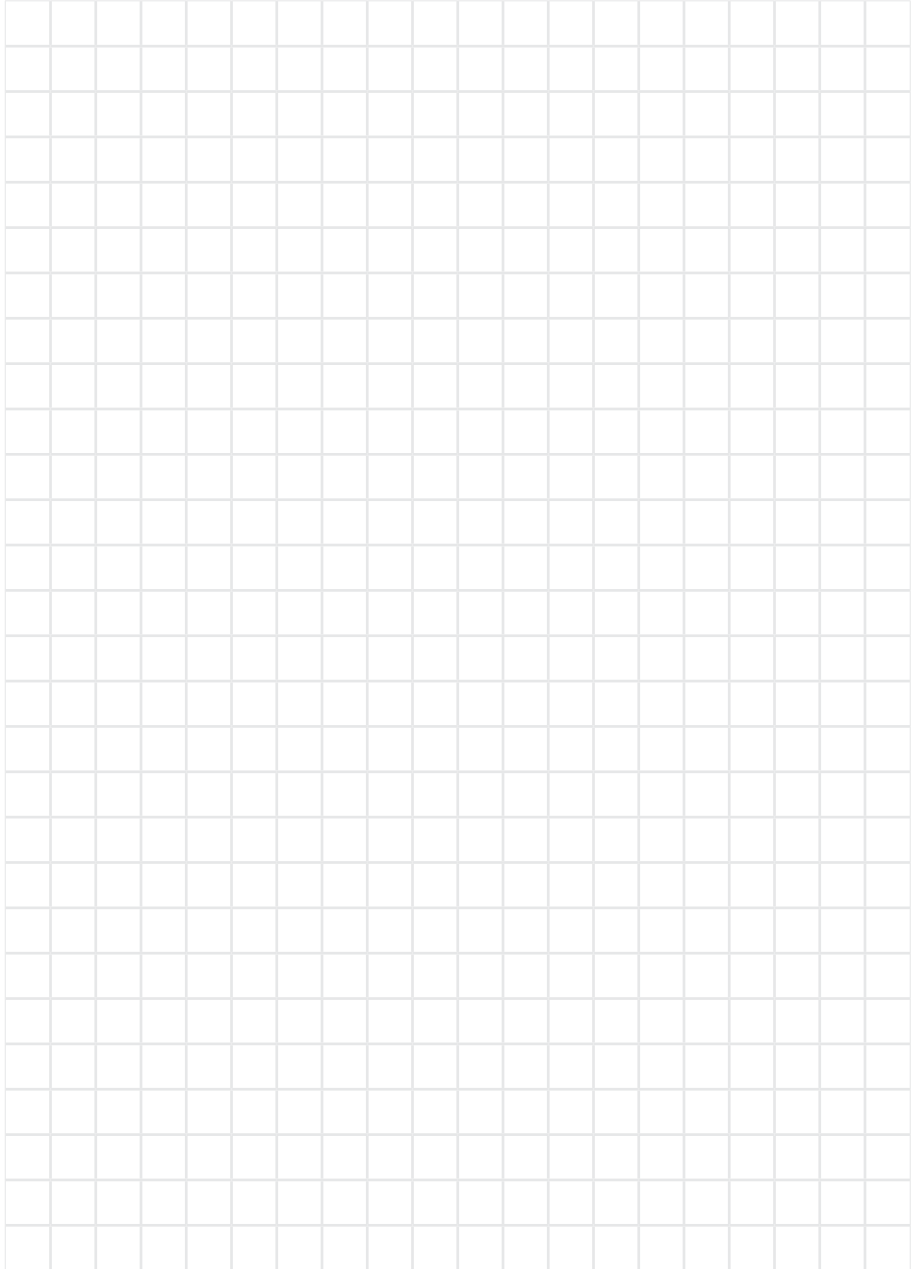
This warranty is given by Puretec Pty Ltd, ABN 44 164 806 688, 37-43 Brodie Road Lonsdale SA 5160, telephone no. 1300 140 140 and email at sales@puretec.com.au.

This warranty is provided in addition to other rights and remedies you have under law: Our goods come with guarantees which cannot be excluded under the Australian Consumer Law. You are entitled to replacement or refund for a major failure and to compensation for other reasonably foreseeable loss or damage. You are also entitled to have the goods repaired or replaced if the goods fail to be of acceptable quality and the failure does not amount to a major failure.

Warranty/New Zealand

This warranty is given by Puretec NZ LP, Reg. No 50081773, PO Box 875 Cambridge 3450 NZ, telephone no. 0800 130 140 and email at sales@puretec.co.nz.

This warranty is provided in addition to other rights and remedies you have under law: Our goods come with guarantees which cannot be excluded under the Consumer Guarantees Act. You are entitled to replacement or refund for a major failure and to compensation for other reasonably foreseeable loss or damage. You are also entitled to have the goods repaired or replaced if the goods fail to be of acceptable quality and the failure does not amount to a major failure.





REGISTER YOUR WARRANTY ONLINE

Register your warranty online within
30 days of your product purchase.



**Simply scan the QR code or visit
puretecgroupp.com/warranty
& complete the form.**

Terms and conditions apply. Proof of purchase must be
retained. Go to puretecgroupp.com for full details.



Puretec®
PERFECTING WATER

AUSTRALIA

P 1300 140 140

E sales@puretec.com.au

W puretec.com.au

NEW ZEALAND

P 0800 130 140

E sales@puretec.co.nz

W puretec.co.nz